



CLASSIC ROUTE BOTSWANA

The CLASSIC ROUTE covers the **highlights of Botswana** (area: 582,000 km²), roughly the same size as Kenya, France or Texas. Most of the country is covered with scrub brush and savanna grassland. With its vast open savannas teeming with free-ranging wildlife, Botswana is truly the Africa of your dreams.

Itinerary: Maun – Okavango Delta – Moremi – Savuti – Chobe – Kasane
* plus Victoria Falls extension (recommended)

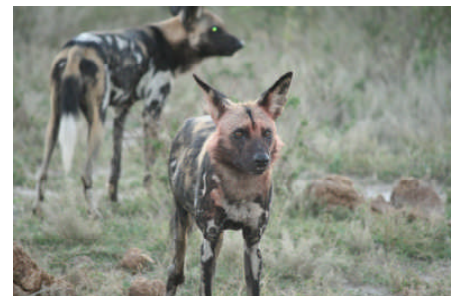
Day 1 Arrival in Maun, the self-proclaimed gateway to the Okavango Delta, where you will be met by a pilot-guide. Charter flight into the **Okavango Delta**, also the “inner Delta”, the area west, north and south of Moremi where you can truly be seduced by the calming spell of the region when you glide on the channels in mokoros, canoes and small boats. In the afternoon you will embark on your first game activity, which, most likely, will be a cruise through the channels. **Overnight in the Okavango Delta**

Day 2 The 1430 km Okavango River rises in central Angola, then flows southeast across Namibia’s Caprivi Strip before entering Botswana east of Shakawe. There, 18.5 billion cubic metres of water annually spread like an open palm across the flat landscape as they’re consumed by the thirsty air and swallowed by the Kalahari sands. Eventually, the river loses itself in a 16,000 km² maze of lagoons, channels and islands. In this desert country, the incongruous waters of the resulting wetland – **known as the Okavango Delta** – attract myriad birds and other wildlife. Full day explorations of the surroundings in boats and on foot. **Overnight in the Okavango Delta**

Day 3 Transfer from the Okavango Delta into the **Moremi Game Reserve** (depending on the camp, either by charter flight or by boat/road) for a two-night stay, where you will experience the combination of a water/land based camp, depending on the water levels, i.e. time of the year you visit. **Overnight in Moremi**

Day 4 The **Moremi Game Reserve** encompasses 3,000 km² with large areas of dry land rising between vast wetlands. The most prominent dry features are Chiefs Island and the Moremi Tongue, comprising the reserve’s northeastern extent, where you will be situated. Habitats range from mopane woodland and thorn scrub to dry savanna, riverbank woodlands, grasslands, floodplains, marshes, permanent waterways, lagoons and islands. **Overnight in Moremi**

Day 5 Depending on where you stayed, either road or flight transfer to **Savuti**, where you will find an overwhelming abundance of wildlife, especially cats and wild dogs. Game drives are done exclusively in very comfortable open vehicles under the guidance of very knowledgeable and experienced rangers. **Overnight in Savuti**



Day 6 **Savuti** is one of Botswana’s most famous big game areas and has been said to have one of the highest concentrations of game in southern Africa. It is also very beautiful and has an atmosphere all of its own. This is due to the **Savuti Channel**, which sometimes flows. **Overnight in Savuti**

Day 7 You will be flown into the **Chobe National Park**, where you will enjoy a three-day stay filled with safaris and boat cruises on the **Chobe River**. **Overnight in Chobe**

Day 8/9 The **Chobe National Park**, covering some 11,000 km², is Botswana’s most popular tourist destination and home to its most varied wildlife. The riverfront strip along the northern tier, where you will enjoy many cruises, supports the greatest wildlife concentration. The main attraction of the park are the large herds of **elephants**. You might even cross an elephant on the streets of Kasane town! Along the river, elephants and hippos are everywhere. **Overnight in Chobe**



Day 10 You will be transferred to **Kasane**, from where you depart OR continue to **Victoria Falls** (recommended).

Day 10 Transfer from Kasane to **Victoria Falls** (Zimbabwe) to your hotel and settle in. We recommend you take part in a **sundowner cruise** along the Zambezi River, where you will be able to see hippos and various birds, also crocodiles and giraffes among others. **Overnight in Victoria Falls**

Day 11 During the day explore the mighty **Victoria Falls**. There are aptly described as one of the Seven Natural Wonders of the World: the falls are 1.7km wide and 108m high and have an annual average flow of one million litres per second. During the rainy season (March to May), the flow can be ten times higher, while in the dry season (September to December), the volume of water can be as low as 4% of the peak flow. Many other activities are offered in Victoria Falls, ranging from Bungee jumping to elephant back safaris. **Overnight in Victoria Falls**

Day 12 In the afternoon transfer to the airport for departure.

